

EZP2019+ programmer manual features

Product picture:



Field of application:

This programmer can read and write the bios chips of DVD,TV,PC,harddisk,etc.

Features:

1. USB 2.0 interface, the speed is 12Mbps.
2. The speed of reading and writing is fast.
3. Auto detect chip modles.
4. Auto select power votage.
5. Surpport 25 FLASH, 24 EEPROM, 25 EEPROM, 93 EEPROM,etc.
6. Small shape.
7. Windows XP, Windows Vista, Win7 ,WIN8,WIN10.

List:

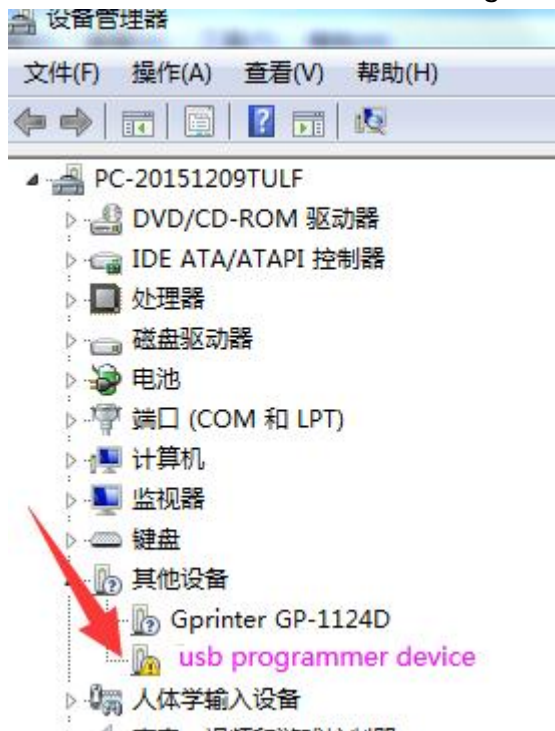
1. Programmer 1
2. Usb cable 1
3. CD 1
4. Manual(a file on CD) 1
5. Simple socket for SMD chips 2

**EZP2019+ programmer manual
driver setup**

There are two usb device driver files: installer_x64.exe or install_x86.exe

Run the "*.exe"; The step of usb driver setup is same as other usb devices.

If the automatic installation does not success (Eg: WIN8/WIN10), you can also choose to install USB driver from Device manager.



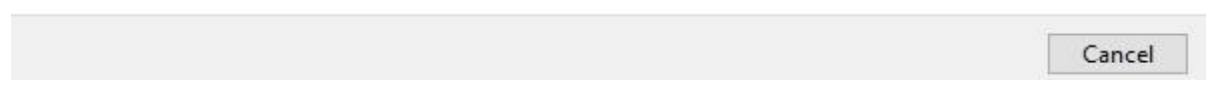
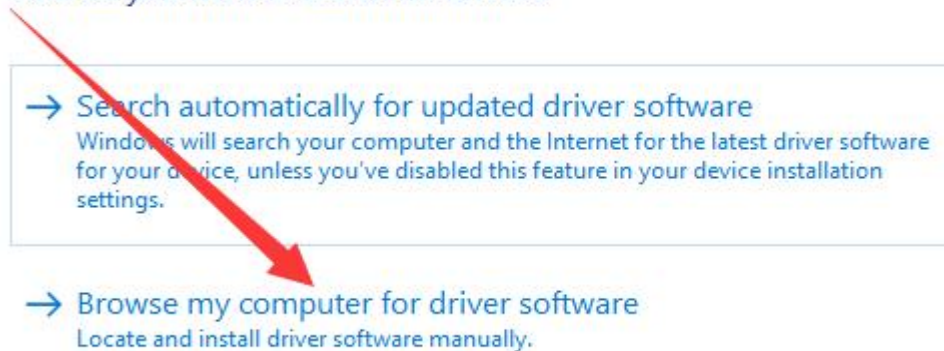
or



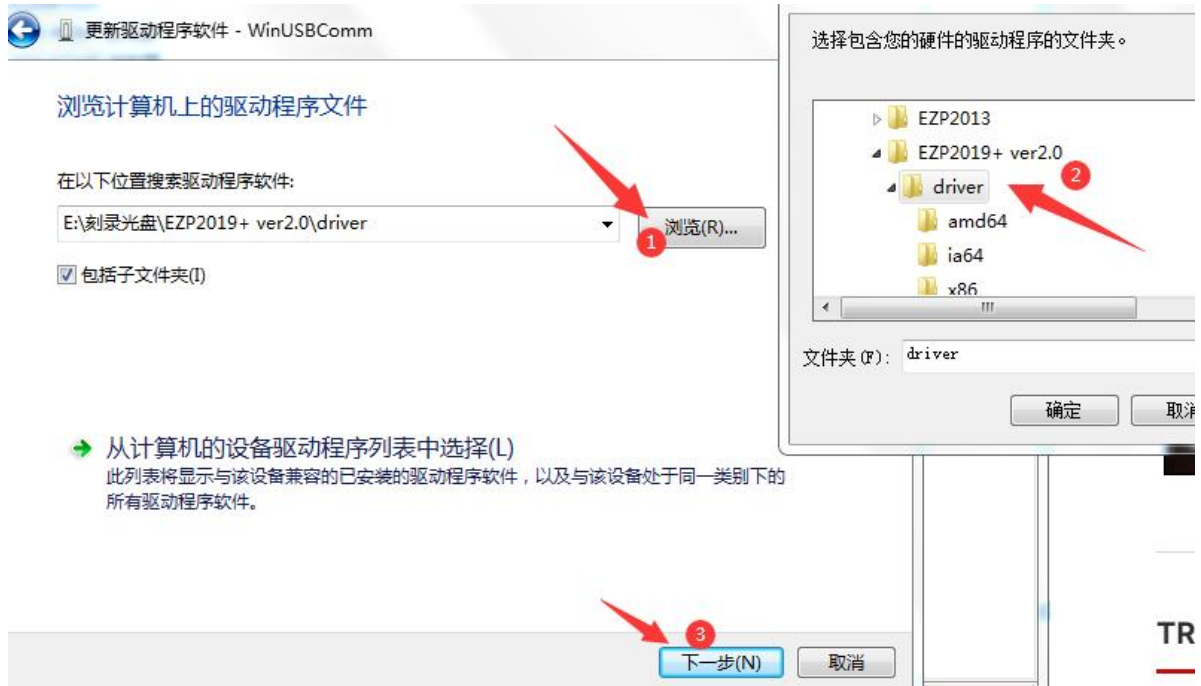
Right click---à update the driver, then chose "Browse my computer for driver software"



How do you want to search for drivers?



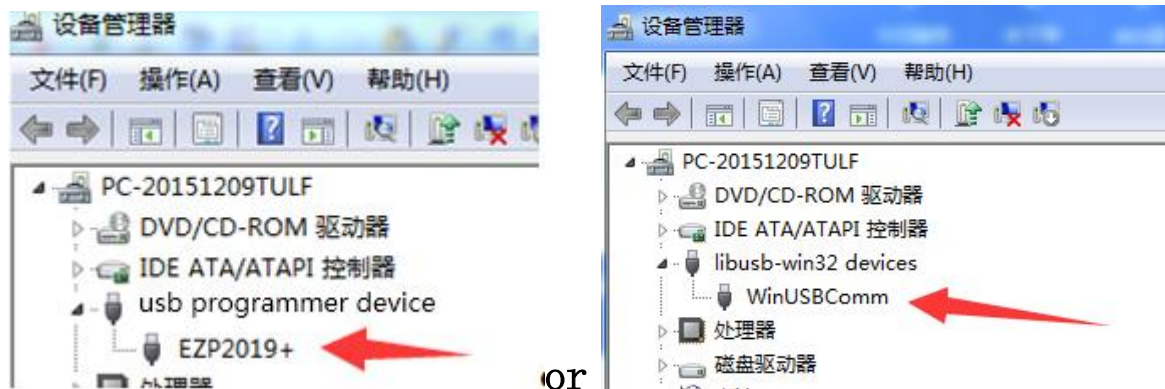
1. Browse to the ” ../EZP2019+ ver2.0/driver” file(copy the software from the CD to the computer first); And click the next.



2. Some computers may display the following prompt, please select "always install driver "

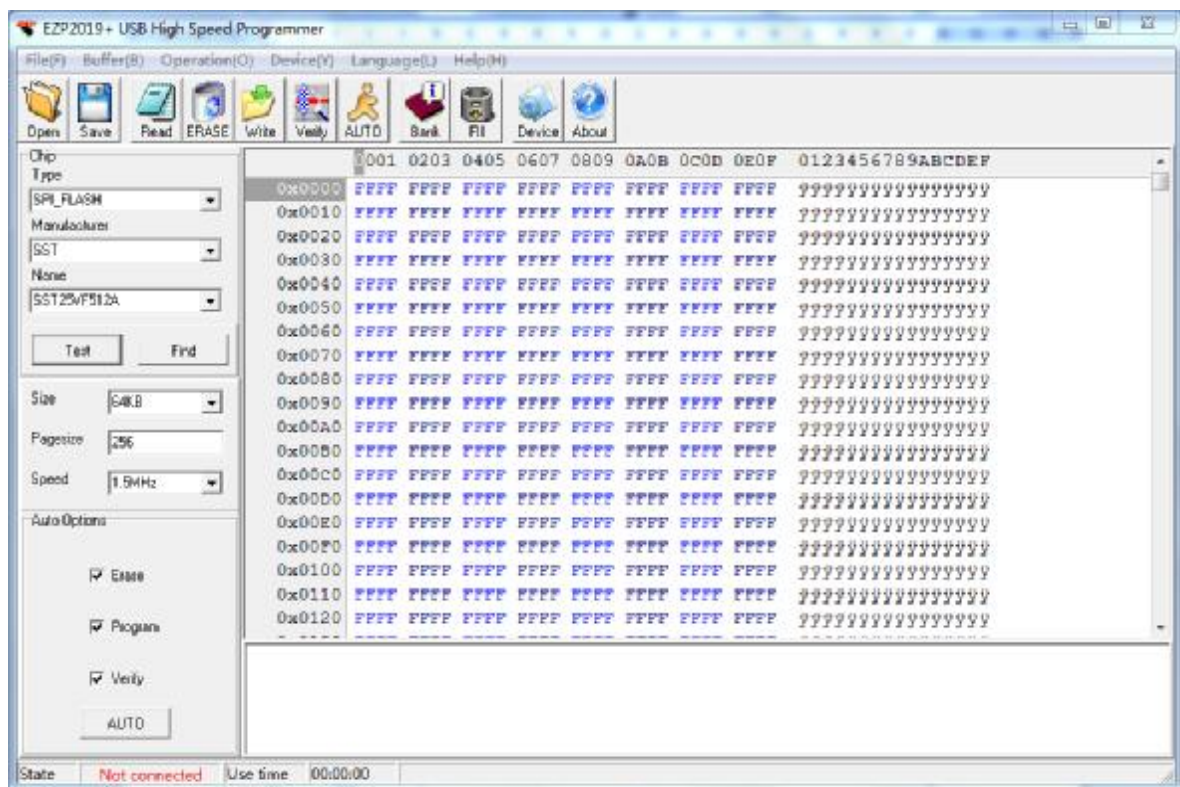


3. One of the following figures appears, indicating that the driver is installed

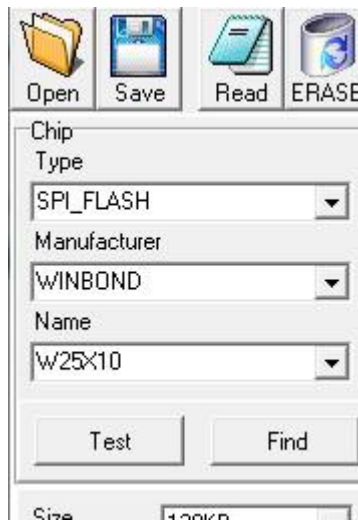


**EZP2019+ programmer manual
software setup**

Software not need to install, please run the *.exe programm.



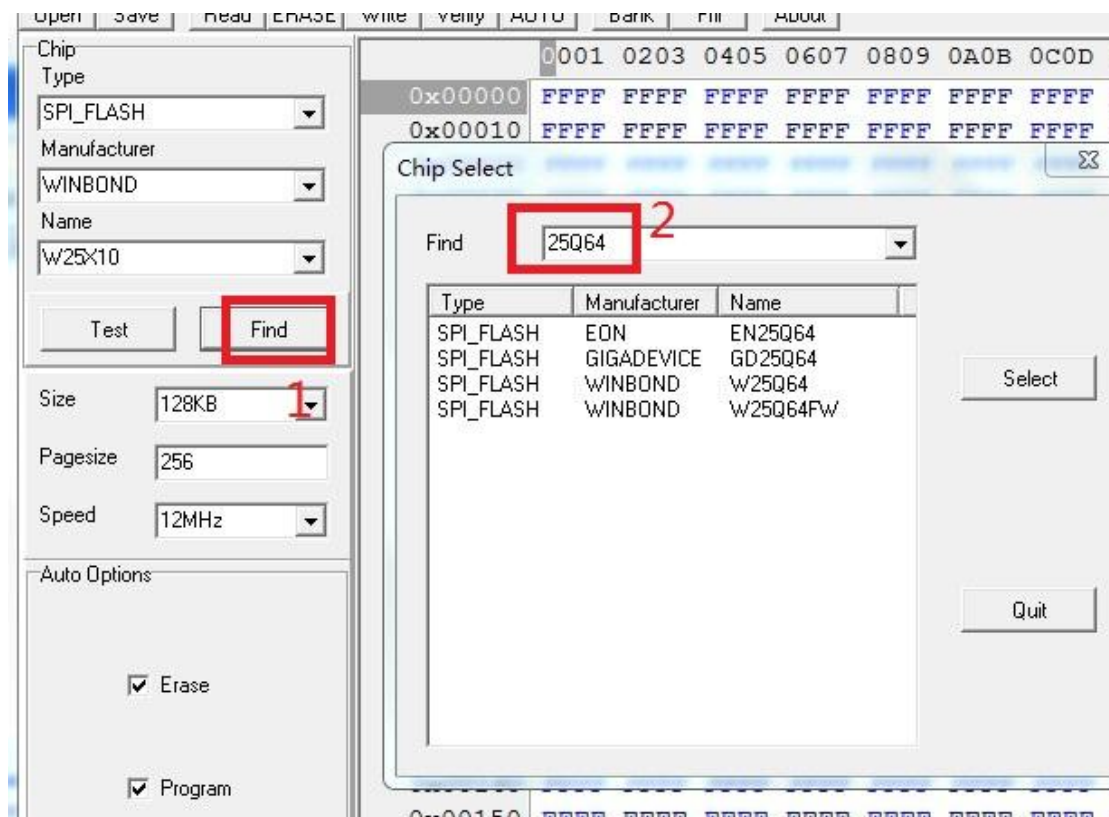
EZP2019+ programmer manual select chip



User can select chip mode from "Type", "Manu" and "Chip" combobox.

User can click "Search" to select chip mode too.

EZP2019+ programmer manual search chip



Click "find", then pop the above dialog, enter the keyword, the matched chips will be listed in the listbox.

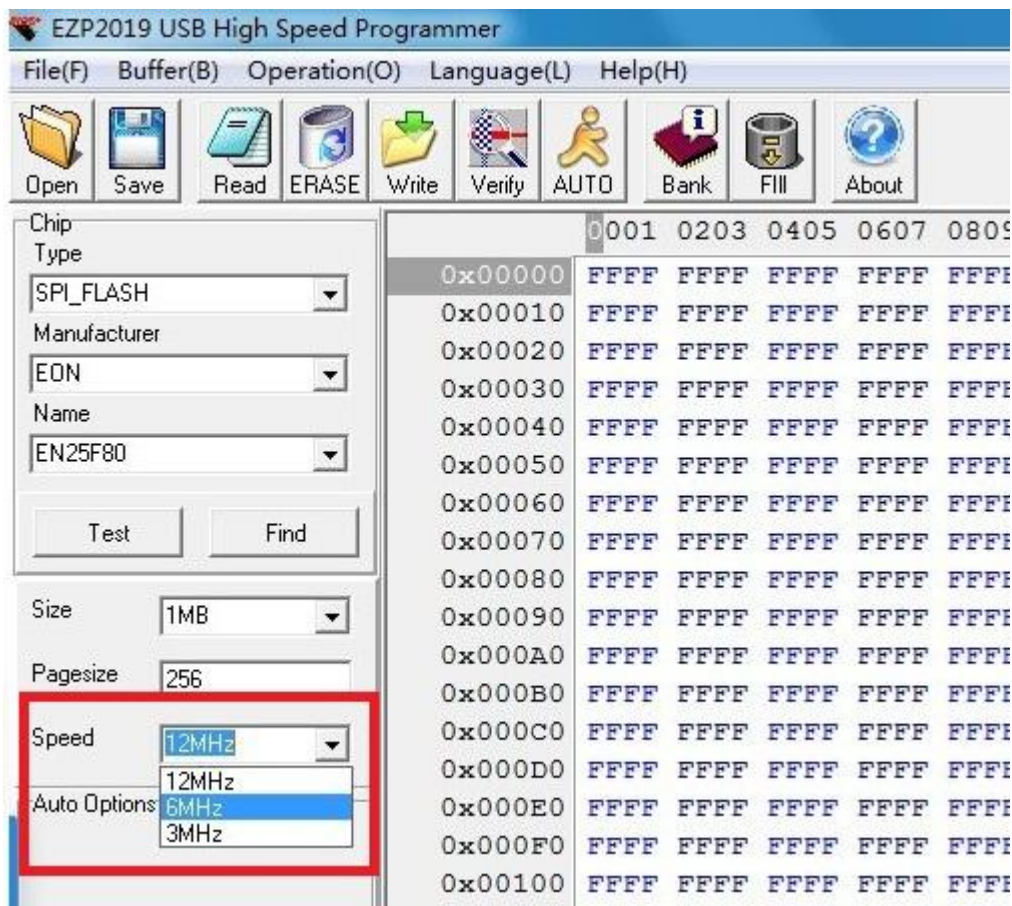
EZP2019+ programmer manual detect chip



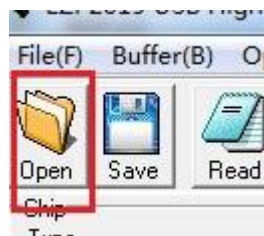
Click "Detect", the software will pop a message box to show chip name.

The programmer only can detect 25 series spi flash.

Note: Some 8M or more chips are detect ID unstable. recommended to select the chip manually. In addition, if some errors when reading and writing, please to lower the speed(see the picture below).



EZP2019+ programmer manual
open file

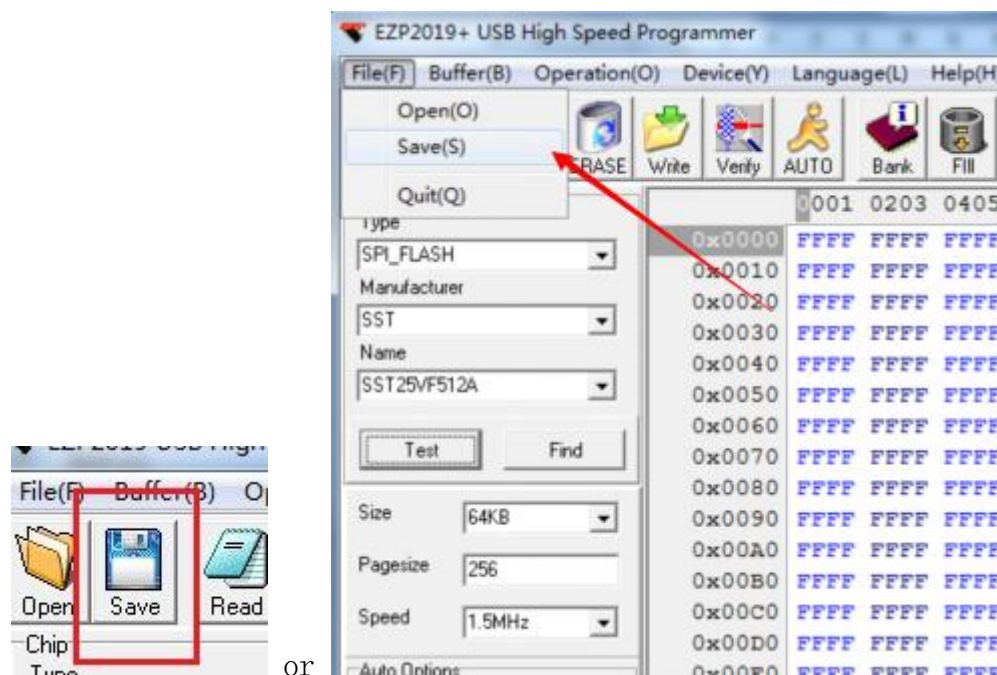


Click "OPEN", or



Load data to buffer from a bin file or a hex file.

EZP2019+ programmer manual save file



Save data to a bin file from buffer.

EZP2019+ programmer manual Edit code

0x00020	FFFF	FFFF	FFFF	FFFF	FFFF	FFFF	FFFF	FFF
0x00030	FFFF	FFFF	FFFF	FFFF	FFFF	FFFF	FFFF	FFF
0x00040	FFFF	FFFF	FFFF	FFFF	FFFF	FFFF	FFFF	FFF
0x00050	FFFF	FFFF	FFFF	FFFF	FFFF	FFFF	FFFF	FFF
0x00060	FFFF	FFFF	FFFF	FFFF	FFFF	FFFF	FFFF	FFF
0x00070	FFFF	FFFF	FFFF	FFFF	FFFF	FFFF	FFFF	FFF
0x00080	FFFF	FFFF	FFFF	FFFF	FFFF	FFFF	FFFF	FFF
0x00090	FFFF	FFFF	FFFF	FFFF	FFFF	FFFF	FFFF	FFF
0x000A0	FFFF	AACD	EEFF	FFFF	FFFF	FFFF	FFFF	FFF
0x000B0	FFFF	FFFF	FFFF	FFFF	FFFF	FFFF	FFFF	FFF
0x000C0	FFFF	FFFF	FFFF	FFFF	FFFF	FFFF	FFFF	FFF
0x000D0	FFFF	FFFF	FFFF	FFFF	FFFF	FFFF	FFFF	FFF
0x000E0	FFFF	FFFF	FFFF	FFFF	FFFF	FFFF	FFFF	FFF
0x000F0	FFFF	FFFF	FFFF	FFFF	FFFF	FFFF	FFFF	FFF
0x00100	FFFF	FFFF	FFFF	FFFF	FFFF	FFFF	FFFF	FFF

User can change data in buffer.

EZP2019+ programmer manual erase chip

One 25 flash must be erased before writing.

No need to erase one 24 eeprom before writting.

No need to erase one 93 eeprom before writting.

**EZP2019+ rogrammer manual
read chip**

Read data to buffer from chip.

**EZP2019+ rogrammer manual
write chip**

Write data to chip from buffer.

**EZP2019+ rogrammer manual
verify chip**

Compare the data in chip to the data in buffer.

It's necessary to execute the verify command after writting.

**EZP2019+ rogrammer manual
auto**

Erase, write and verify.

**EZP2019+ ogrammer manual
FAQ**

1. Verify error.

(1)User must select a correct chip modle before writting.

(2)User must erase chip before writting if che chip is a 25 flash.

(3)User must select a correct memory unit width if che chip is a 93 eeprom.

(4)The chip maybe bad.

2. Chip position when reading and writting.

(1)If the programmer is linked to PC, the chip must be placed in the socket as below:

3. Automatically detect chip modle unsuccessful.

See the section "detect chip" in this document.

4. The simple SMD socket.